

DEUXIÈME QUINTETTE

1^{er} VIOLON

GABRIEL FAURÉ

Op. 115

I

Allegro moderato. $\text{♩} = 88$

11

2^d violon

1

1^{er} violon

Tous droits d'exécution réservés.

Copyright by Durand & C^{ie} 1921

DURAND S.A. Editions Musicales

D. & F. 9964

OUVRAGE PROTEGE - Photocopie (même partielle) INTERDITE
LOI du 11 Mars 1957

Constituerait contrefaçon [CODE PENAL Art. 425]

21, RUE VERNET - 75008 PARIS



11

f

sempre f

meno f *cresc.*

12

f *f*

sempre f

13

p espressivo

cresc.

f *p*

p

cresc. *f*

14

p subito *cresc.* *f*

Detailed description: This page of a musical score for the first violin part contains measures 11 through 14. The music is written in a single staff with a treble clef and a key signature of two flats (B-flat and E-flat). Measure 11 begins with a dynamic marking of *f* and features a melodic line with slurs and accents. Measure 12 starts with *sempre f* and includes a triplet of eighth notes. Measure 13 is marked *meno f* and *cresc.*, showing a melodic line with a slur and a dynamic change to *p* towards the end. Measure 14 begins with *p subito*, followed by *cresc.* and *f*, featuring a complex melodic line with many slurs and accents. The page number '4' is in the top left, and the instrument name '1er VIOLON' is at the top center. Measure numbers 11, 12, 13, and 14 are boxed in their respective staves.

p espressivo *cresc.*

f

p

15 *sempre p*

(b) *cre - scen - do* *f*

16

f

17 *f* *f*

18 *p* *1*

cresc. *f*

19 *f sempre*

II

Allegro vivo. ♩ = 164

p

cresc. *f* *pizz.*

arco *p*

f

pizz. *arco* *pizz.* *cresc.* *f* *dim.* *p*

arco *f* *p* *f*

dim. *p*

f *mezzo p*

espressivo *cantando* *mezzo p*

cresc. *mf*

1er VIOLON

5

2 2 4

p *cresc.*

6

f 1

f *p*

f 1

f *p* 1

7

f

f

8

1 *p* 1

1^{er} VIOLON

9 *p* *cresc.*

f *p*

10 *p* *pizz.* *p* *arco* *cresc.* *f*

11 *pizz.* *(b)* *p* *cresc.* *f* *arco* *pizz.*

arco *f*

cantando espressivo *p*

12

Detailed description: This page of a musical score for the first violin part contains measures 9 through 12. The music is written in a single staff with a treble clef and a key signature of two flats (B-flat and E-flat). Measure 9 begins with a piano (*p*) dynamic and a crescendo (*cresc.*) leading to a fermata. Measure 10 starts with a forte (*f*) dynamic, followed by a piano (*p*) dynamic and a pizzicato (*pizz.*) section. Measure 11 features a crescendo (*cresc.*) from piano (*p*) to forte (*f*), with a *pizz.* section and a *(b)* marking. Measure 12 is marked *cantando espressivo* and starts with a piano (*p*) dynamic. Measure 13 begins with a forte (*f*) dynamic and an *arco* marking. Measure 14 continues with a *pizz.* marking. Measure 15 is marked *arco*. Measure 16 is marked *f*. Measure 17 is marked *cantando espressivo* and *p*. Measure 18 is marked *f*. Measure 19 is marked *cantando espressivo* and *p*. Measure 20 is marked *f*. Measure 21 is marked *cantando espressivo* and *p*. Measure 22 is marked *f*. Measure 23 is marked *cantando espressivo* and *p*. Measure 24 is marked *f*. Measure 25 is marked *cantando espressivo* and *p*. Measure 26 is marked *f*. Measure 27 is marked *cantando espressivo* and *p*. Measure 28 is marked *f*. Measure 29 is marked *cantando espressivo* and *p*. Measure 30 is marked *f*. Measure 31 is marked *cantando espressivo* and *p*. Measure 32 is marked *f*. Measure 33 is marked *cantando espressivo* and *p*. Measure 34 is marked *f*. Measure 35 is marked *cantando espressivo* and *p*. Measure 36 is marked *f*. Measure 37 is marked *cantando espressivo* and *p*. Measure 38 is marked *f*. Measure 39 is marked *cantando espressivo* and *p*. Measure 40 is marked *f*. Measure 41 is marked *cantando espressivo* and *p*. Measure 42 is marked *f*. Measure 43 is marked *cantando espressivo* and *p*. Measure 44 is marked *f*. Measure 45 is marked *cantando espressivo* and *p*. Measure 46 is marked *f*. Measure 47 is marked *cantando espressivo* and *p*. Measure 48 is marked *f*. Measure 49 is marked *cantando espressivo* and *p*. Measure 50 is marked *f*. Measure 51 is marked *cantando espressivo* and *p*. Measure 52 is marked *f*. Measure 53 is marked *cantando espressivo* and *p*. Measure 54 is marked *f*. Measure 55 is marked *cantando espressivo* and *p*. Measure 56 is marked *f*. Measure 57 is marked *cantando espressivo* and *p*. Measure 58 is marked *f*. Measure 59 is marked *cantando espressivo* and *p*. Measure 60 is marked *f*. Measure 61 is marked *cantando espressivo* and *p*. Measure 62 is marked *f*. Measure 63 is marked *cantando espressivo* and *p*. Measure 64 is marked *f*. Measure 65 is marked *cantando espressivo* and *p*. Measure 66 is marked *f*. Measure 67 is marked *cantando espressivo* and *p*. Measure 68 is marked *f*. Measure 69 is marked *cantando espressivo* and *p*. Measure 70 is marked *f*. Measure 71 is marked *cantando espressivo* and *p*. Measure 72 is marked *f*. Measure 73 is marked *cantando espressivo* and *p*. Measure 74 is marked *f*. Measure 75 is marked *cantando espressivo* and *p*. Measure 76 is marked *f*. Measure 77 is marked *cantando espressivo* and *p*. Measure 78 is marked *f*. Measure 79 is marked *cantando espressivo* and *p*. Measure 80 is marked *f*. Measure 81 is marked *cantando espressivo* and *p*. Measure 82 is marked *f*. Measure 83 is marked *cantando espressivo* and *p*. Measure 84 is marked *f*. Measure 85 is marked *cantando espressivo* and *p*. Measure 86 is marked *f*. Measure 87 is marked *cantando espressivo* and *p*. Measure 88 is marked *f*. Measure 89 is marked *cantando espressivo* and *p*. Measure 90 is marked *f*. Measure 91 is marked *cantando espressivo* and *p*. Measure 92 is marked *f*. Measure 93 is marked *cantando espressivo* and *p*. Measure 94 is marked *f*. Measure 95 is marked *cantando espressivo* and *p*. Measure 96 is marked *f*. Measure 97 is marked *cantando espressivo* and *p*. Measure 98 is marked *f*. Measure 99 is marked *cantando espressivo* and *p*. Measure 100 is marked *f*.

cresc. *f* *p*

III

Andante moderato. ♩ = 58

p espressivo *f* *p*
sempre espressivo *f* *mp*
mf espressivo *cresc.* *pizz.*

1er VIOLON

arco
p *sempre p*

cantando *cresc.* **4**

f *meno f*

5 *espress.* *f*

f

6 *mp* *cresc.* *f*

p *f*

7 *mf espress.* **2**

mf *cresc.* *f* *f* **8**

9 *p espress.*



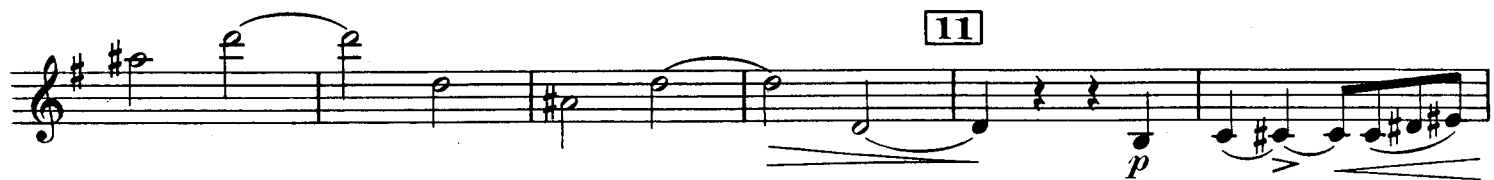
10



poco a poco cresc. f sempre espress.



11



12



13



cantando

mp

14



cresc.

f



dim.

p

IV

Allegro molto. $\text{♩} = 80$

6 2^d von 1^{er} von

mp

cresc.

f

1 *mp marcato* *cresc.*

f

f sempre

25 Alto 2^d von 3 1^{er} von

mf

cresc. *f*

4

3 *mp* 2

3 4^e corde
espressivo

5 *sempre espressivo*
cresc.

6 *f*

7 8

v_{elle} 1^{er} Von *mp* 8 *Poco a poco accel.*

1 1

4 9 *mezzo p*

1 1

10 *cresc.*

5 *f*

5

f *meno f*

11 *cresc.*

12 19 *Alto*

13 *1er von* *mf*

14 *f*

15 *4e corde* *espressivo*

16 *f* *sempre f*

cresc. *cresc. sempre*

2d von

17

f sempre

sempre f pizz.

18 *sempre f* arco 2

sempre f 2

19 *sempre f espressivo*

dim. *p*

poco a poco cresc. *f*

ff